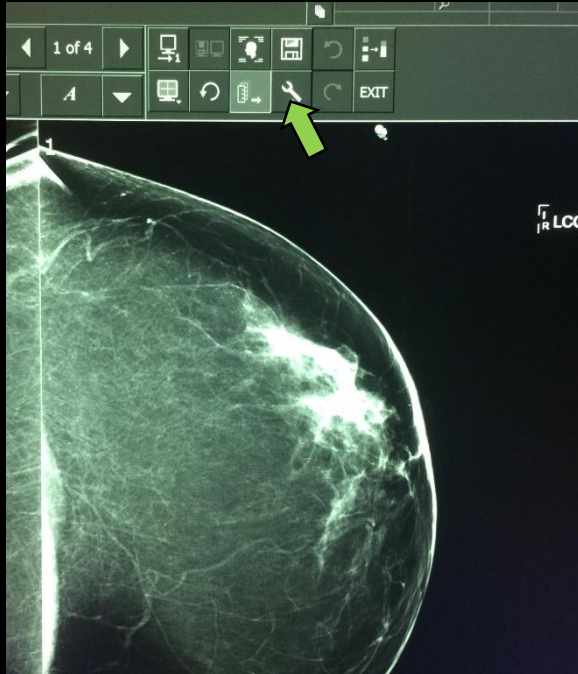


PACS workstation setup for Mammography

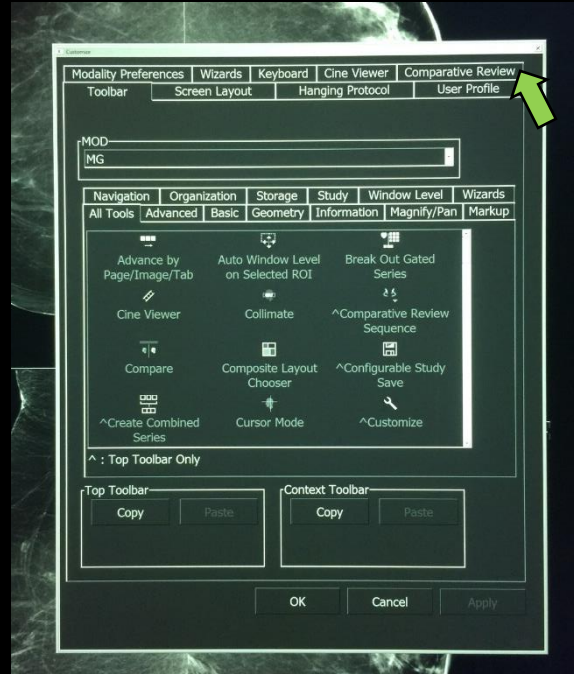
Step 1:



Open a mammography study.

Click on the Toolbar Settings icon at the top of the window (wrench).

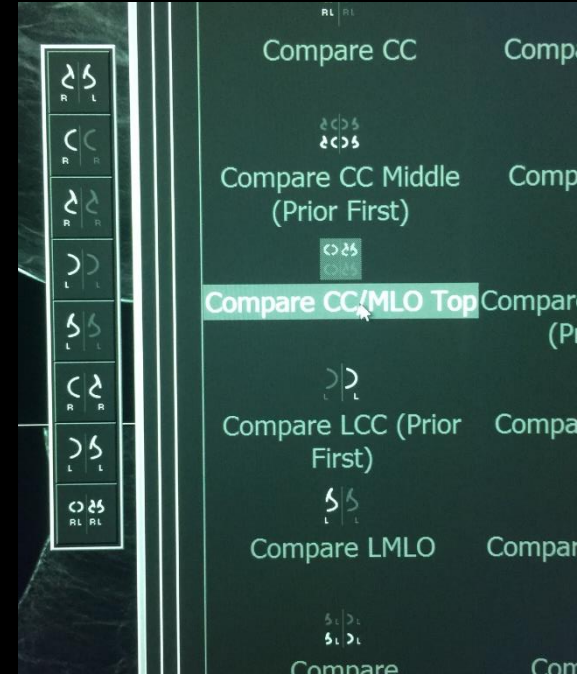
Step 2:



Click on "Comparative Review" at the top of the Toolbox.

You do not need to adjust the anything under the "Hanging Protocols" menu.

Step 3:

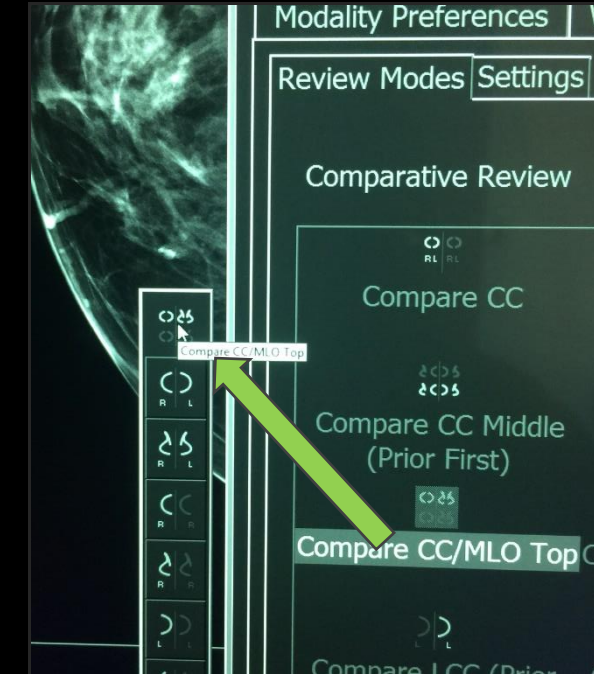


You will see a menu of items and a vertically oriented list of icons.

Find the item entitled: "Compare CC/MLO Top".

Be sure it is the one that ends in "Top".

Step 4:

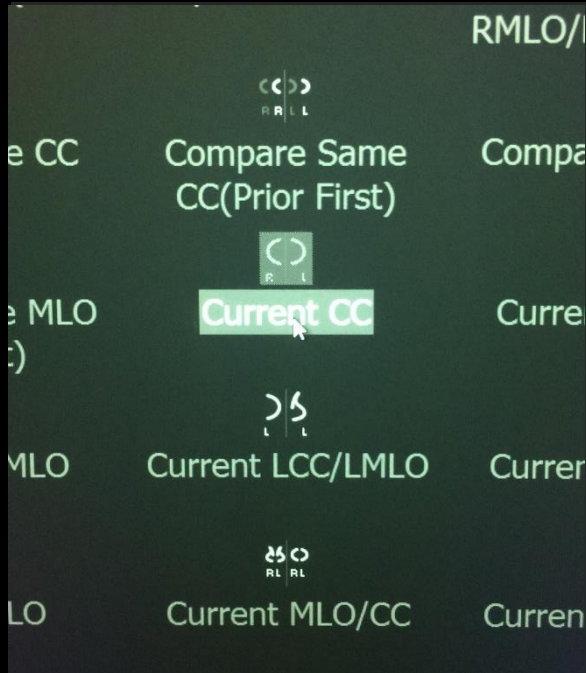


Click on it then drag the item to the top of the list of icons as above.

You will see a horizontal white bar, then the icon will appear in the list when you release to button on the mouse.

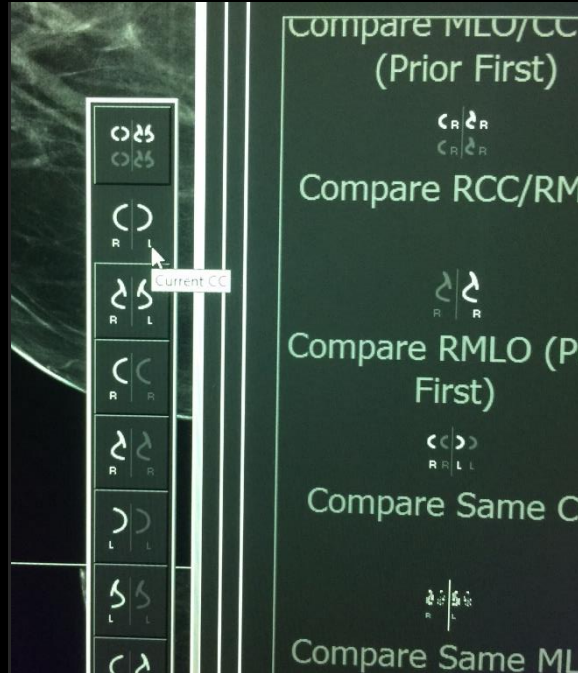
PACS workstation setup for Mammography

Step 5:



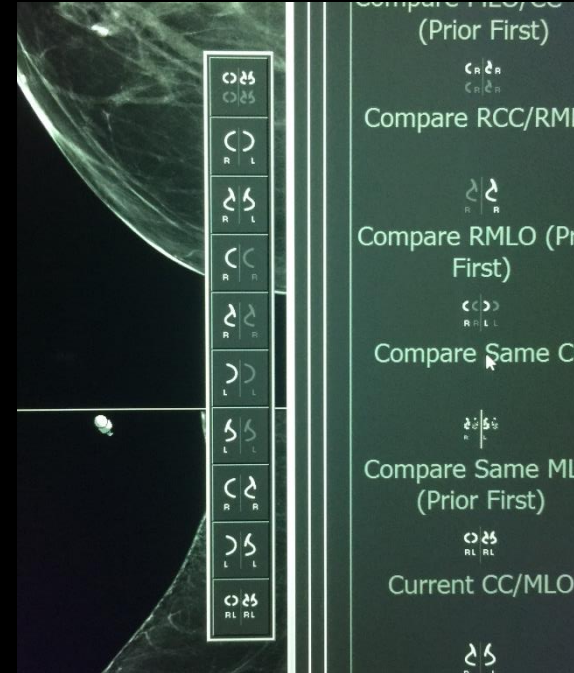
Next find the icon “Current CC”.

Step 6:



Then drag and drop immediately below “Compare CC/MLO Top”.

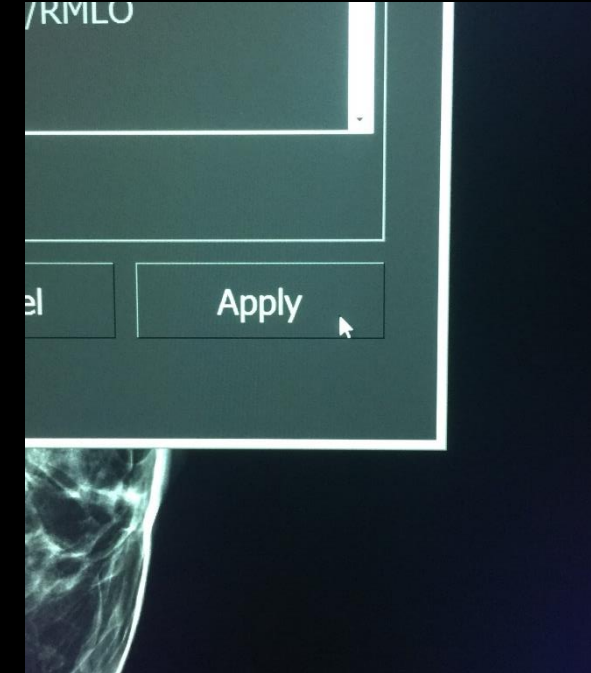
Step 7:



Next drag and drop “Current MLO”. Repeat with “Compare RCC”, then “Compare RMLO”, then “Compare LCC”, then “Compare LMLO”, then “Current RCC/RMLO”, then “Current LMLO/LCC”, then “Current CC/MLO” (optional)

The final list should look like this

Step 8:



Make sure you hit Apply before closing

PACS workstation setup for Mammography: what each screen should look like

